

+/- 18.19 ACRES FOR SALE

E Hwy. 34, Sharpsburg – Coweta County

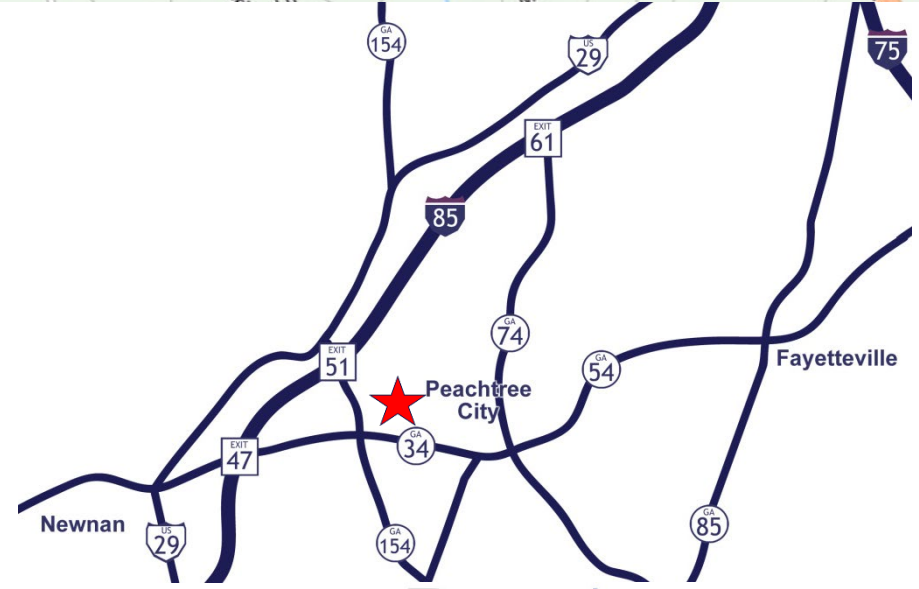
For more information please contact:
Brent Randolph Cell: 770.318.6815



Property Profile



- +/- 18.19 Acres
- +/- 1,480 ft. Hwy 34 frontage
- +/- 1 mile east of Hwy 154 – [Click here for map](#)
- Convenient to restaurants, shopping
- Traffic Counts
 - East: 22,600 VPD
 - West: 36,400 VPD
- NEW Price: \$225,000
\$210,000/acre
- Zoned: "Old C" and RC
- All utilities available: water, sewer, gas, electric
- Less than +/- 4 miles to Peachtree City or I-85
- County: Coweta



COMMERCIAL REAL ESTATE | DEVELOPMENT | CONSTRUCTION | PROPERTY MANAGEMENT

770-632-4000

RWCRE.net

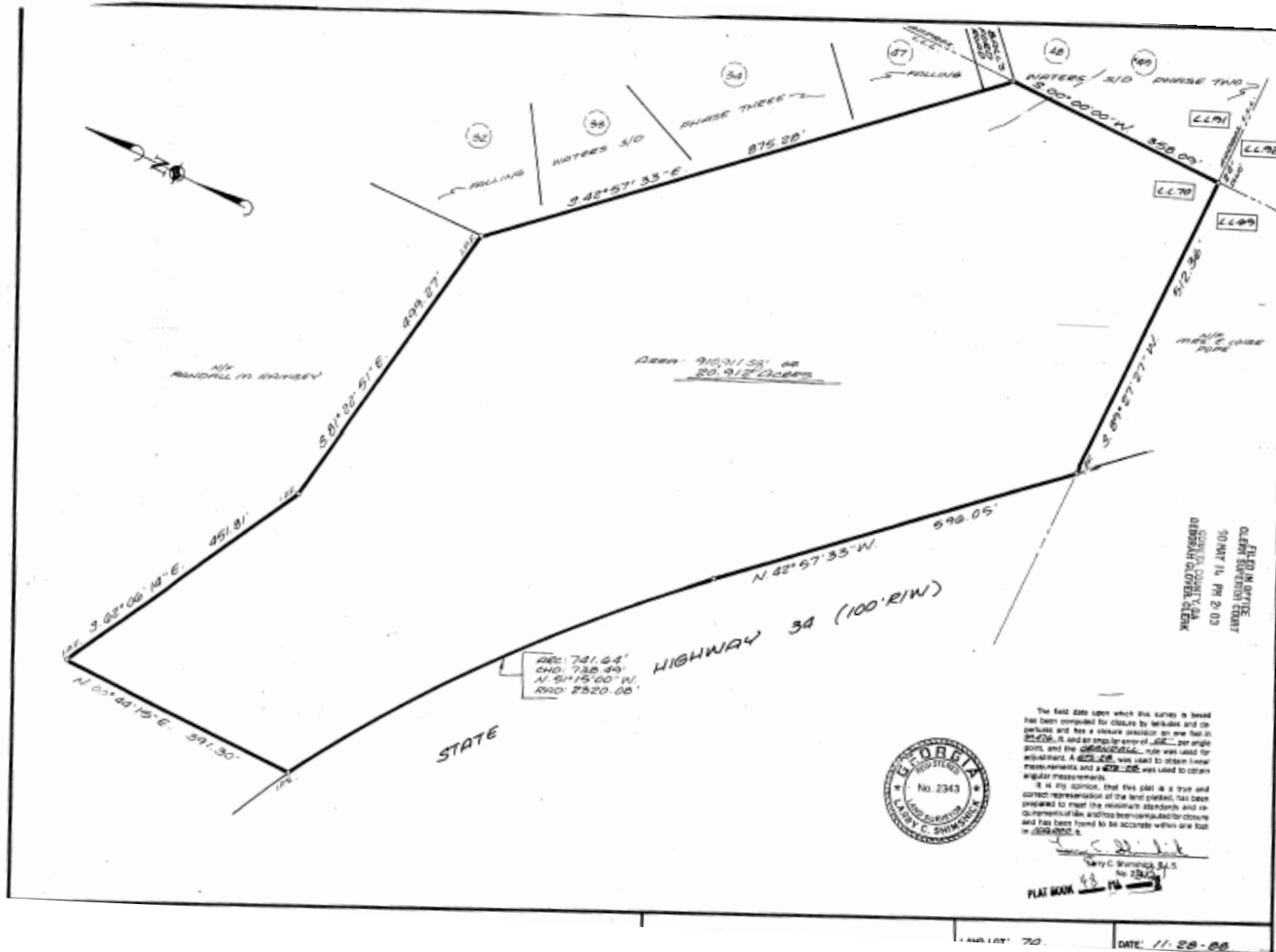


This information has been obtained from sources believed reliable. While we do not doubt its accuracy we have not verified it and make no guarantee, warranty or representation about it.

+/- 18.19 ACRES FOR SALE
E Hwy. 34, Sharpsburg – Coweta County

For more information please contact:
Brent Randolph Cell: 770.318.6815

SURVEY



COMMERCIAL REAL ESTATE | DEVELOPMENT | CONSTRUCTION | PROPERTY MANAGEMENT

770-632-4000

RWCRE.net



This information has been obtained from sources believed reliable. While we do not doubt its accuracy we have not verified it and make no guarantee, warranty or representation about it.