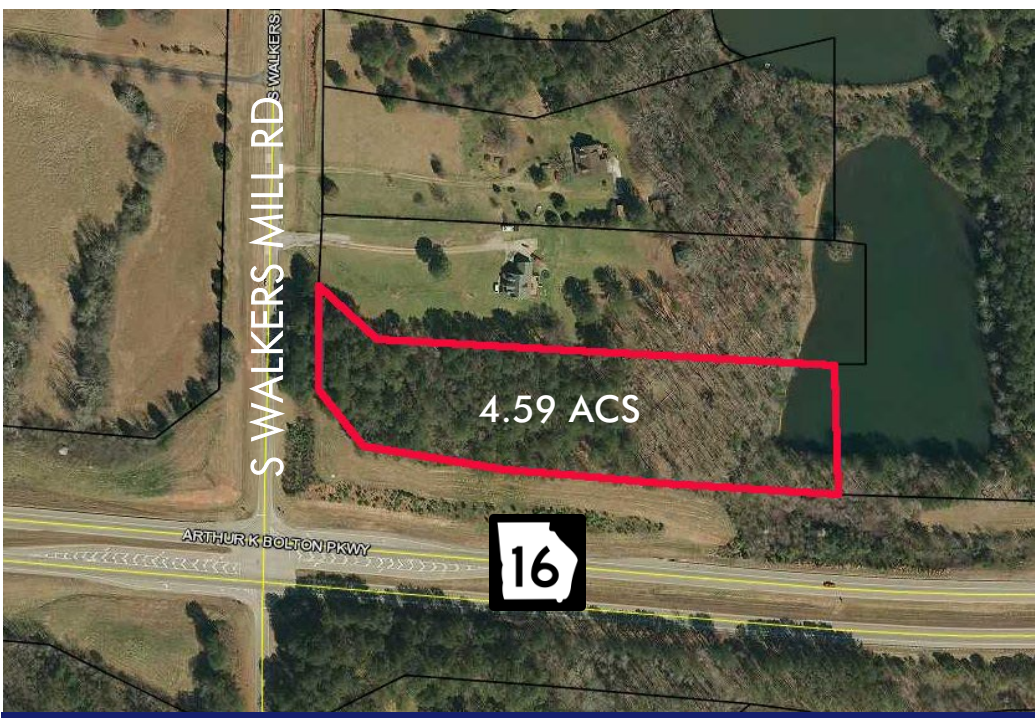


# ALL OFFERS CONSIDERED! +/- 4.59 ACRES FOR SALE

## S Walkers Mill Rd & Hwy 16, Spalding County

For more information please contact:  
Brent Randolph Cell: 770.318.6815  
Michael Johnson Cell: 404.663.3728



Property Profile



- +/- 4.59 Acres
- Price: \$185,000 - **ALL OFFERS CONSIDERED!**
- 800+ feet Hwy 16 frontage
- Zoned: Residential
- NE Corner of S. Walkers Mill Rd & Hwy. 16
- +/- 5.5 miles to I-75 or downtown Griffin
- Traffic Counts on Hwy 16
  - West of site: 13,100 VPD
  - East of site: 12,100 VPD
- County: Spalding



COMMERCIAL REAL ESTATE | DEVELOPMENT | CONSTRUCTION | PROPERTY MANAGEMENT

770-632-4000

RWCRE.net



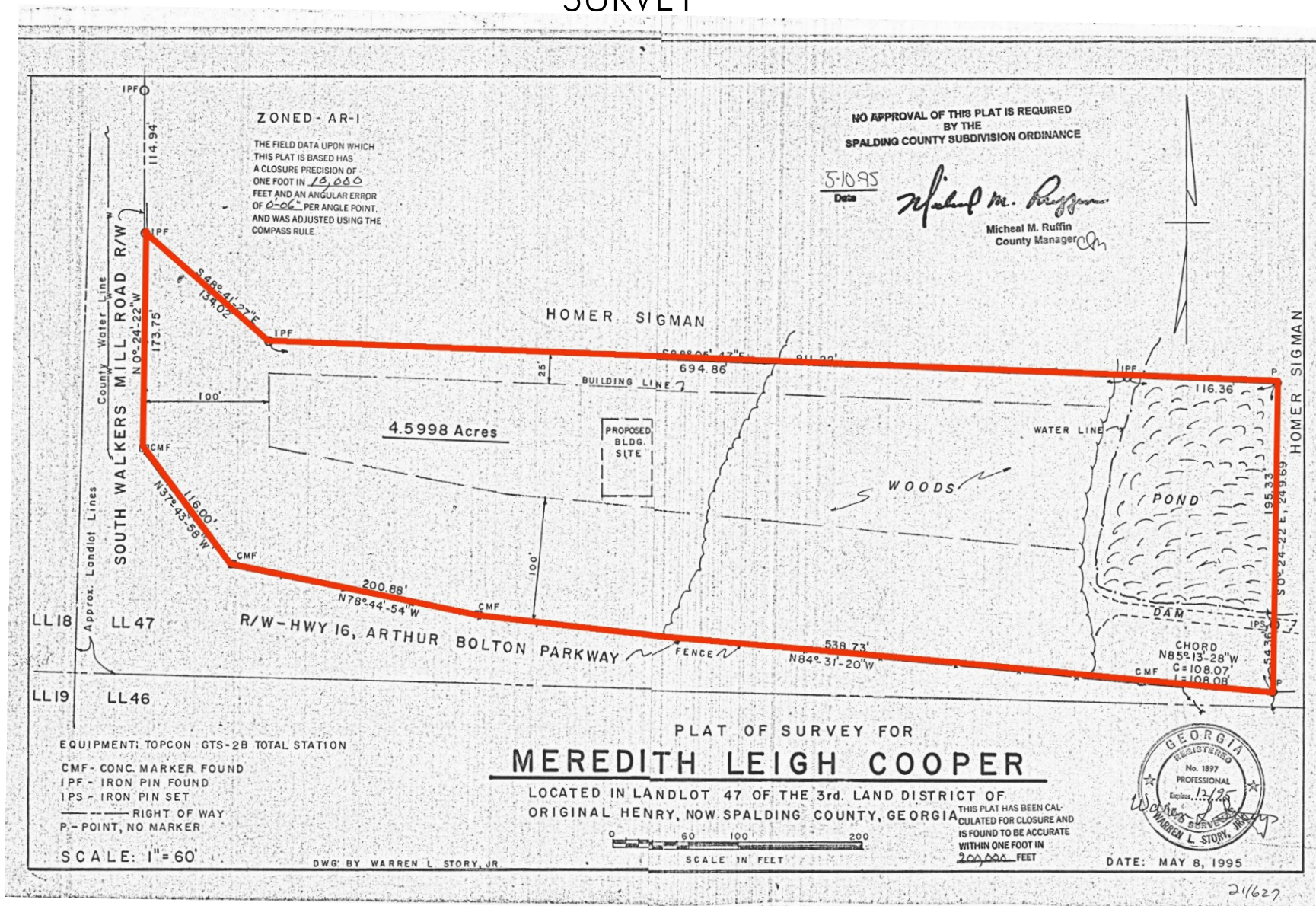
This information has been obtained from sources believed reliable. While we do not doubt its accuracy we have not verified it and make no guarantee, warranty or representation about it.

# ALL OFFERS CONSIDERED! +/- 4.59 ACRES FOR SALE

S Walkers Mill Rd & Hwy 16, Spalding County

For more information please contact:  
 Brent Randolph Cell: 770.318.6815  
 Michael Johnson Cell: 404.663.3728

## SURVEY



COMMERCIAL REAL ESTATE | DEVELOPMENT | CONSTRUCTION | PROPERTY MANAGEMENT

770-632-4000

RWCRE.net



ACBR  
 ATLANTA COMMERCIAL  
 BOARD OF REALTORS



Randolph  
 Williams

## Detailed Description

### **4.59 Acres of Prime Residential Land for Sale!**

Discover the incredible opportunity to own this expansive +/- 4.59 acre property located at S Walkers Mill Rd & Hwy 16 in Spalding County. With over 800 feet of frontage on Hwy 16, this versatile piece of land offers endless possibilities for development.

Situated at the NE corner of S. Walkers Mill Rd & Hwy. 16, this property is ideally located just 5.5 miles from I-75 or downtown Griffin, ensuring easy access and convenience. The area boasts desirable traffic counts, with 13,100 VPD west of the site and 12,100 VPD east of the site on Hwy 16. This exceptional parcel of land is zoned for residential use, making it perfect for developing your dream home, a private estate, or even a potential investment opportunity.

The county of Spalding offers a serene setting, surrounded by the beauty of nature while still being in close proximity to urban amenities. Don't miss out on this remarkable opportunity to make this property your own. Seize the chance to create your vision with this outstanding piece of land!