

# KEDRON OFFICE PARK – SPACE FOR LEASE

100 World Drive, Peachtree City, GA

For more information please contact:  
Brent Randolph Cell: 770.318.6815



## Property Profile

- +/- 34,865 SF Office Building
- First floor: +/-12,851 RSF  
Suites 100 & 101 - **Available July 1st**
- Class "A" Office Space in Prime Location
- Located adjacent to Restaurants, Retail and Shopping
- 30 minutes from Hartsfield International Airport
- Rental Rate: \$23.00/SF FS
- Parking Ratio: 7.72 per 1,000
- Year Built: 2007
- City: Peachtree City
- County: Fayette

COMMERCIAL REAL ESTATE | DEVELOPMENT | CONSTRUCTION | PROPERTY MANAGEMENT

 770-632-4000

 [RWCRE.net](http://RWCRE.net)



ACBR  
ATLANTA COMMERCIAL  
BOARD OF REALTORS



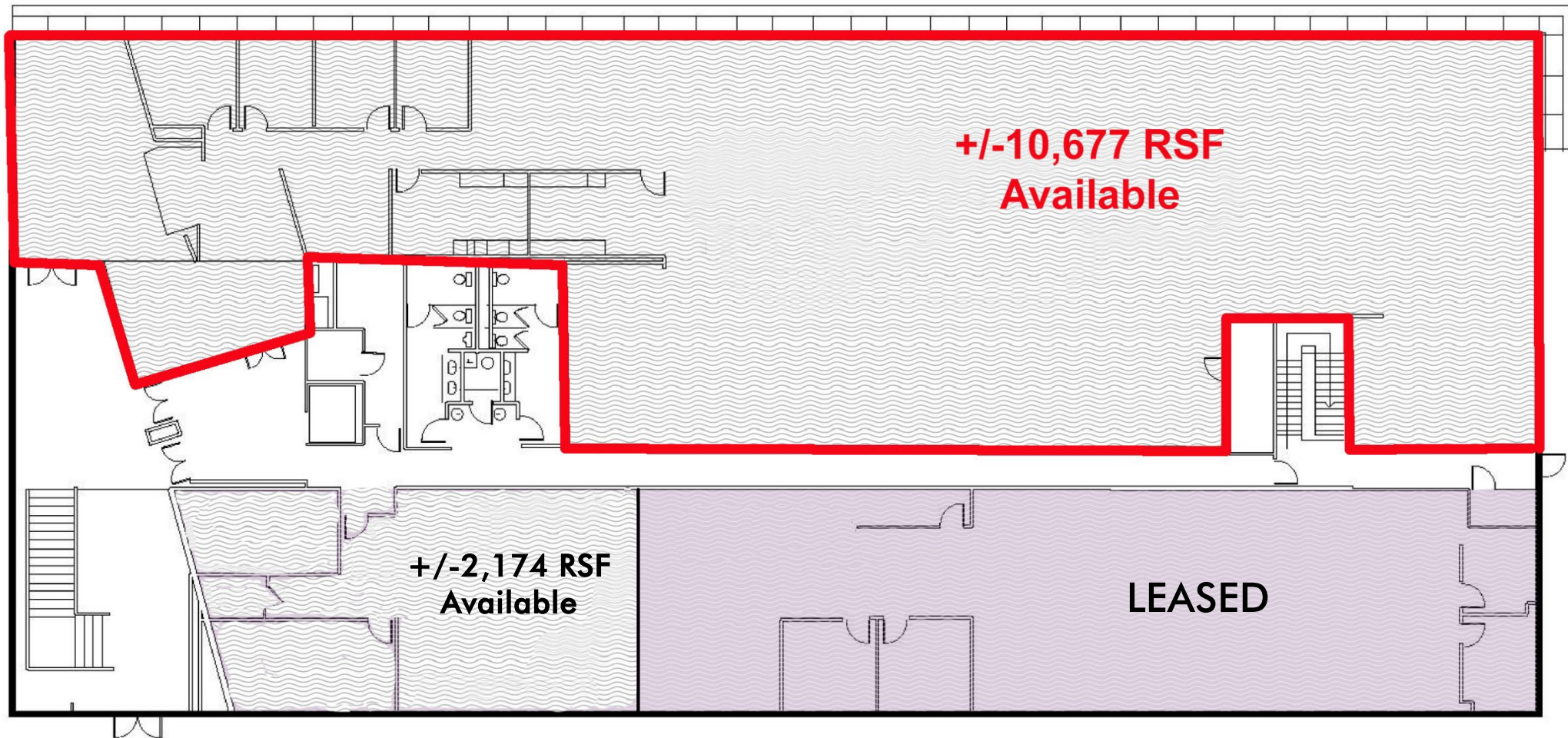
Randolph  
Williams

# KEDRON OFFICE PARK – SPACE FOR LEASE

100 World Drive, Peachtree City, GA

For more information please contact:  
Brent Randolph Cell: 770.318.6815

## Floor Plan – First Floor



COMMERCIAL REAL ESTATE | DEVELOPMENT | CONSTRUCTION | PROPERTY MANAGEMENT

770-632-4000

 [RWCRE.net](http://RWCRE.net)



ACBR  
ATLANTA COMMERCIAL  
BOARD OF REALTORS



Randolph  
Williams

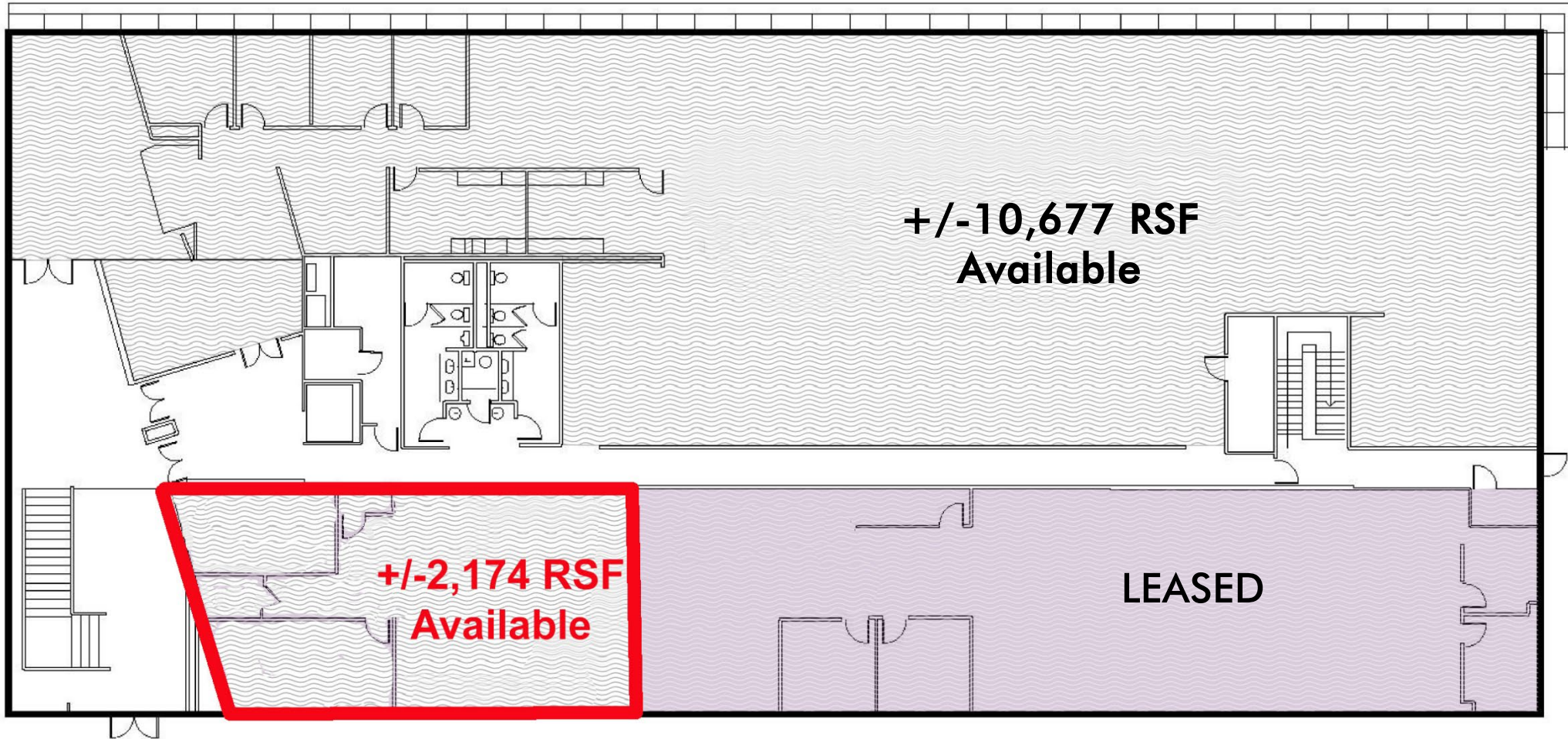
This information has been obtained from sources believed reliable. While we do not doubt its accuracy we have not verified it and make no guarantee, warranty or representation about it.

# KEDRON OFFICE PARK – SPACE FOR LEASE

100 World Drive, Peachtree City, GA

For more information please contact:  
Brent Randolph Cell: 770.318.6815

## Floor Plan – First Floor



COMMERCIAL REAL ESTATE | DEVELOPMENT | CONSTRUCTION | PROPERTY MANAGEMENT

770-632-4000

 [RWCRE.net](http://RWCRE.net)



ACBR  
ATLANTA COMMERCIAL  
BOARD OF REALTORS



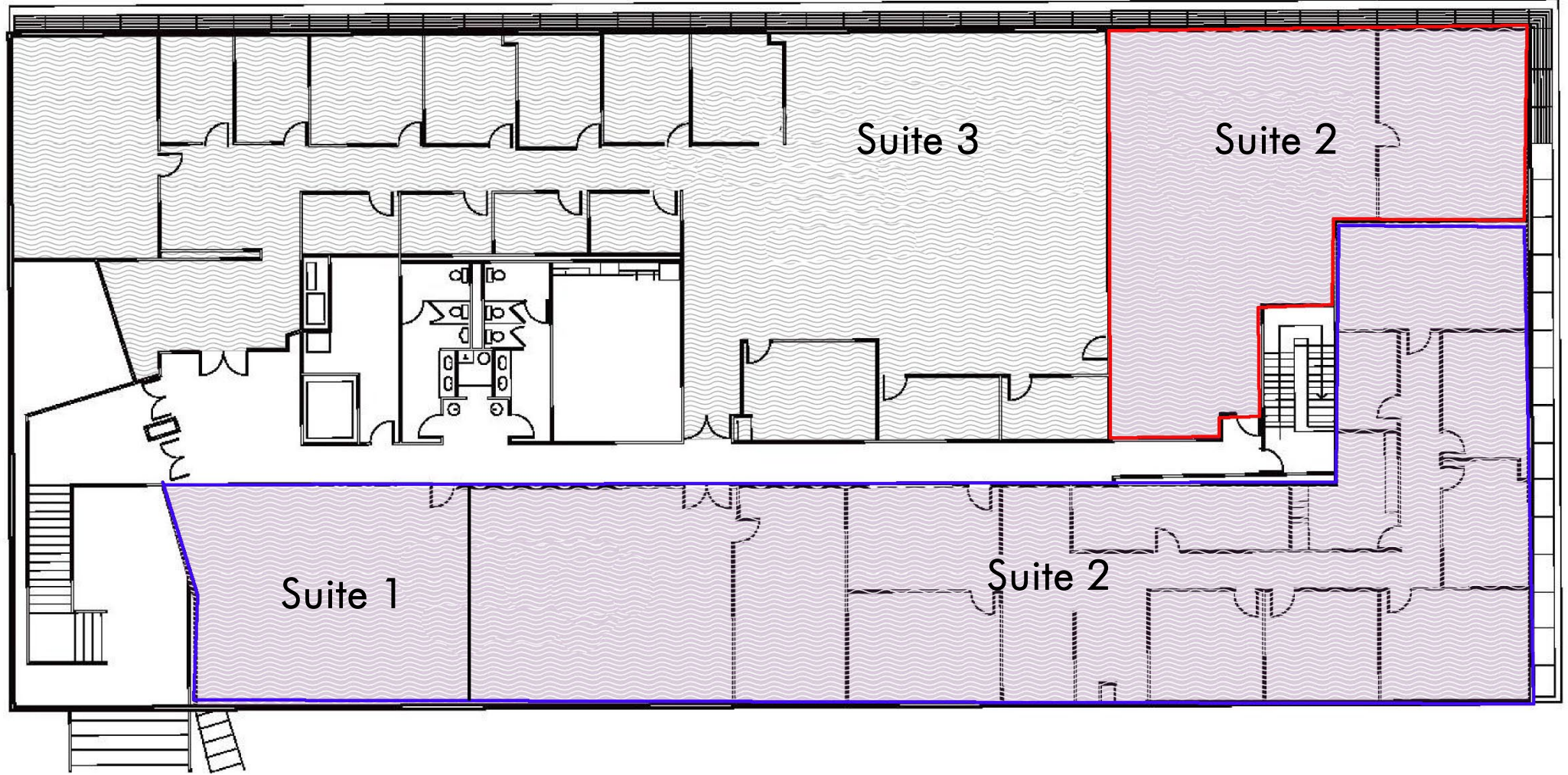
This information has been obtained from sources believed reliable. While we do not doubt its accuracy we have not verified it and make no guarantee, warranty or representation about it.

# KEDRON OFFICE PARK – SPACE FOR LEASE

100 World Drive, Peachtree City, GA

For more information please contact:  
Brent Randolph Cell: 770.318.6815

## Floor Plan – Second Floor, FULLY LEASED



COMMERCIAL REAL ESTATE | DEVELOPMENT | CONSTRUCTION | PROPERTY MANAGEMENT

770-632-4000

RWCRE.net



This information has been obtained from sources believed reliable. While we do not doubt its accuracy we have not verified it and make no guarantee, warranty or representation about it.

# KEDRON OFFICE PARK – SPACE FOR LEASE

100 World Drive, Peachtree City, GA

For more information please contact:  
Brent Randolph Cell: 770.318.6815

## Interior / Exterior Photos



COMMERCIAL REAL ESTATE | DEVELOPMENT | CONSTRUCTION | PROPERTY MANAGEMENT

770-632-4000

 [RWCRE.net](http://RWCRE.net)



ACBR  
ATLANTA COMMERCIAL  
BOARD OF REALTORS



Randolph  
Williams

This information has been obtained from sources believed reliable. While we do not doubt its accuracy we have not verified it and make no guarantee, warranty or representation about it.

# KEDRON OFFICE PARK – SPACE FOR LEASE

100 World Drive, Peachtree City, GA

For more information please contact:  
Brent Randolph Cell: 770.318.6815

Aerial



COMMERCIAL REAL ESTATE | DEVELOPMENT | CONSTRUCTION | PROPERTY MANAGEMENT

770-632-4000

RWCRE.net



ACBR  
ATLANTA COMMERCIAL  
BOARD OF REALTORS



Randolph  
Williams

This information has been obtained from sources believed reliable. While we do not doubt its accuracy we have not verified it and make no guarantee, warranty or representation about it.