

GROUND LEASE AVAILABLE

GA Hwy. 85 & Chestlehurst Road, Senoia, GA 30276

For more information please contact:
Brent Randolph Cell: 770.318.6815
Robin Stewart Cell: 404.925.7460



Property Profile

- Multiple sites available for ground lease
- +/- 745' frontage on GA Hwy. 85
- Traffic count GA Hwy. 85: 13,700 VPD
- GA Hwy 85 tracts across the street from new Publix shopping center
- Sewer available
- Price: Inquire
- Zoning: City of Senoia: GC.
Coweta County: LM, Old C
- City of Senoia & Coweta County parcels
- County: Coweta

COMMERCIAL REAL ESTATE | DEVELOPMENT | CONSTRUCTION | PROPERTY MANAGEMENT

770-632-4000

RWCRE.net

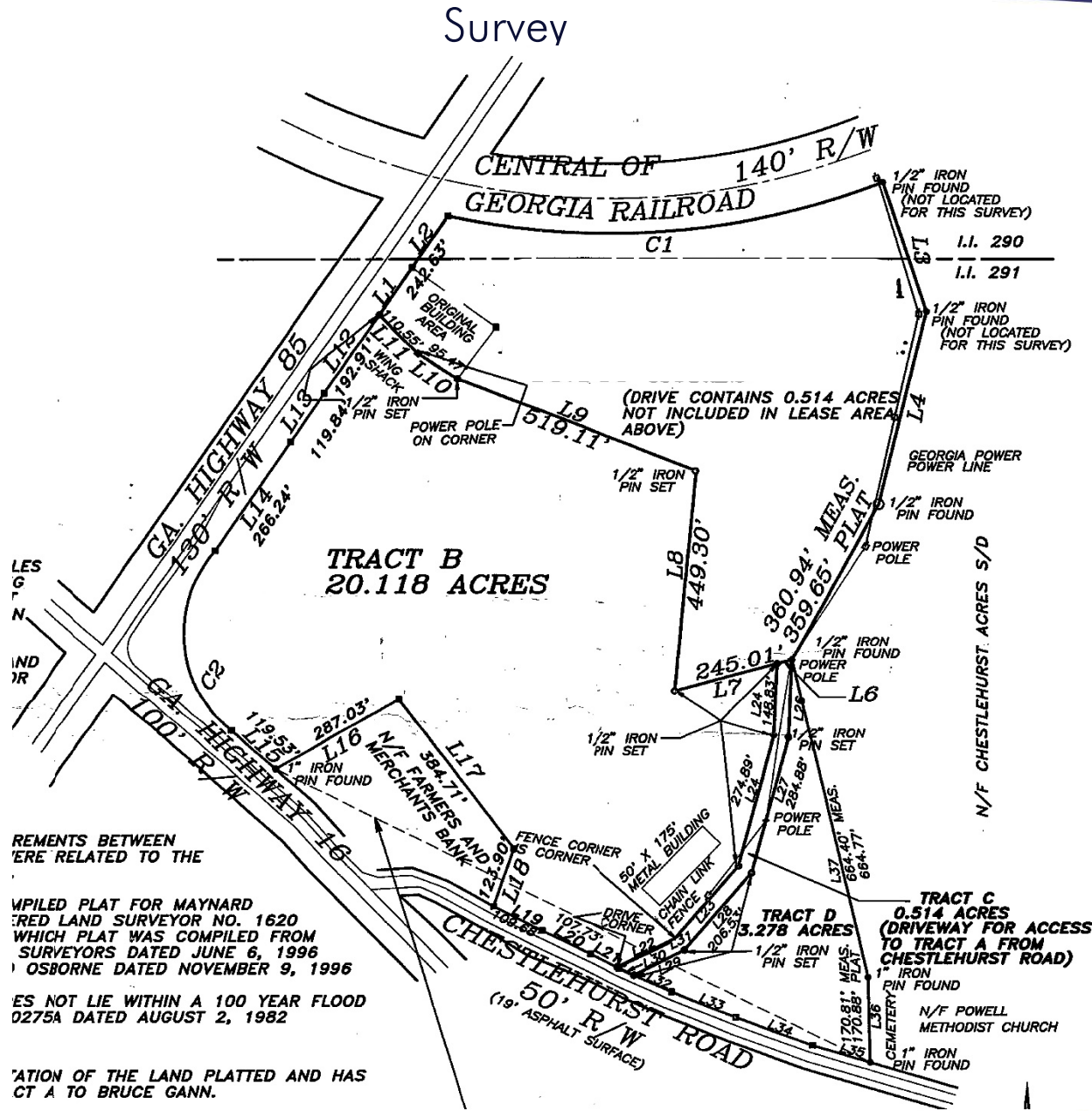


This information has been obtained from sources believed reliable. While we do not doubt its accuracy we have not verified it and make no guarantee, warranty or representation about it.

GROUND LEASE AVAILABLE

GA Hwy. 85 & Chestlehurst Road, Senoia, GA 30276

For more information please contact:
Brent Randolph Cell: 770.318.6815
Robin Stewart Cell: 404.925.7460



COMMERCIAL REAL ESTATE | DEVELOPMENT | CONSTRUCTION | PROPERTY MANAGEMENT

770-632-4000

RWCRE.net



ACBR
ATLANTA COMMERCIAL
BOARD OF REALTORS



Randolph
Williams

GROUND LEASE AVAILABLE

GA Hwy. 85 & Chestlehurst Road, Senoia, GA 30276

For more information please contact:
Brent Randolph Cell: 770.318.6815
Robin Stewart Cell: 404.925.7460

Conceptual Land Plan



COMMERCIAL REAL ESTATE | DEVELOPMENT | CONSTRUCTION | PROPERTY MANAGEMENT

770-632-4000

RWCRE.net



Randolph
Williams

This information has been obtained from sources believed reliable. While we do not doubt its accuracy we have not verified it and make no guarantee, warranty or representation about it.