

INDUSTRIAL BUILDING FOR LEASE

155 INDUSTRIAL WAY, FAYETTEVILLE, GA

For more information please contact:
Brent Randolph Cell: 770.318.6815



Property Profile

- Building: +/- 8,620 SF
- Rate: \$7.50/SF NNN
- Fenced side yard with outside storage
- Zoning: M-1 Light Industrial
- Ceiling Height: +/-22' Clear
- Year Built: 1987
- City: Fayetteville
- County: Fayette
- 3 Roll-Up Doors:
 - 1 - 10' W X 10' H
 - 1 - 10' W X 13' H
 - 1 - 14' W X 13' H



COMMERCIAL REAL ESTATE | DEVELOPMENT | CONSTRUCTION | PROPERTY MANAGEMENT

770-632-4000

RWCRE.net



ACBR
ATLANTA COMMERCIAL
BOARD OF REALTORS



Randolph
Williams

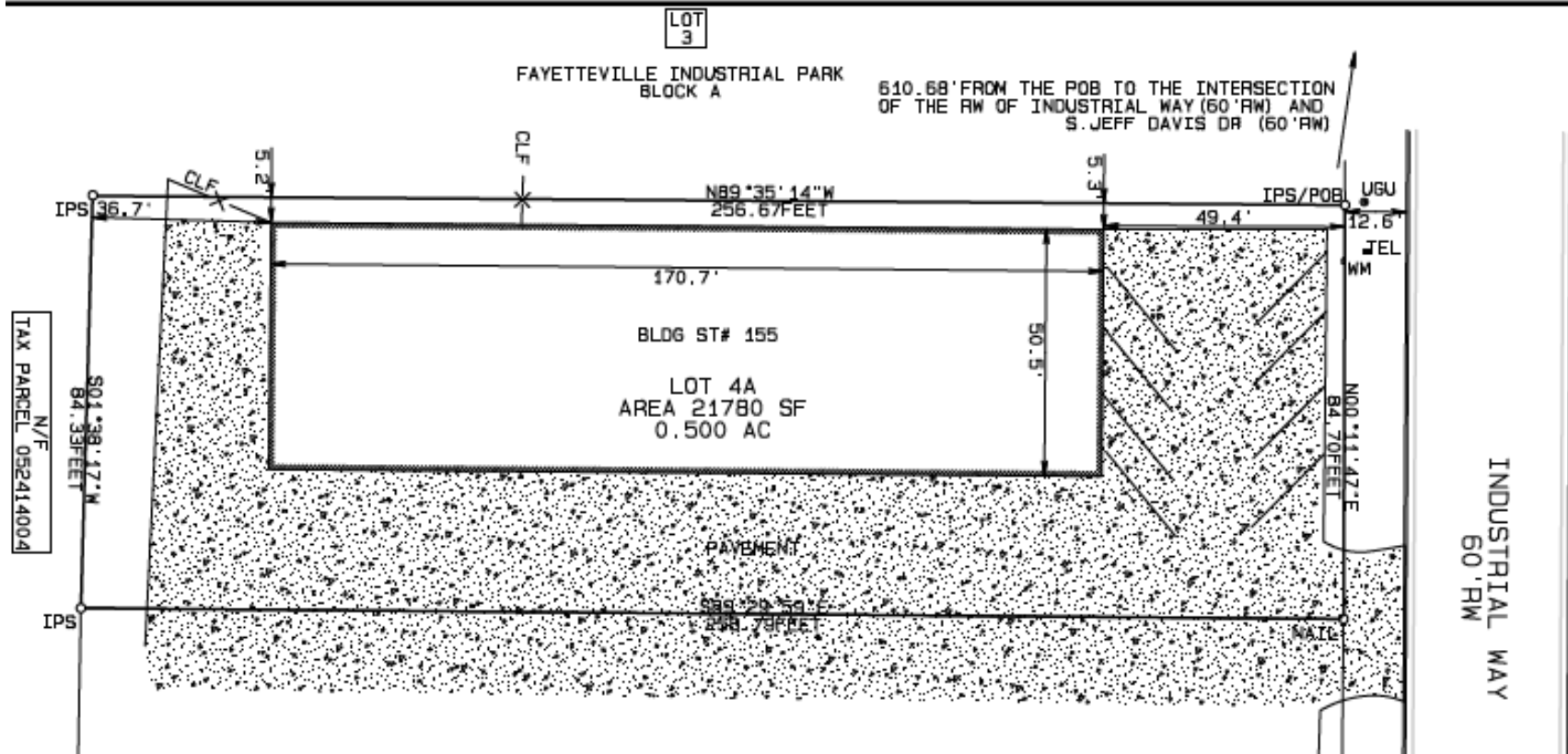
This information has been obtained from sources believed reliable. While we do not doubt its accuracy we have not verified it and make no guarantee, warranty or representation about it.

INDUSTRIAL BUILDING FOR LEASE

155 INDUSTRIAL WAY, FAYETTEVILLE, GA

For more information please contact:
Brent Randolph Cell: 770.318.6815

Site



COMMERCIAL REAL ESTATE | DEVELOPMENT | CONSTRUCTION | PROPERTY MANAGEMENT

770-632-4000

RWCRE.net



ACBR
ATLANTA COMMERCIAL
BOARD OF REALTORS



Randolph
Williams

This information has been obtained from sources believed reliable. While we do not doubt its accuracy we have not verified it and make no guarantee, warranty or representation about it.

Interior Photos

