

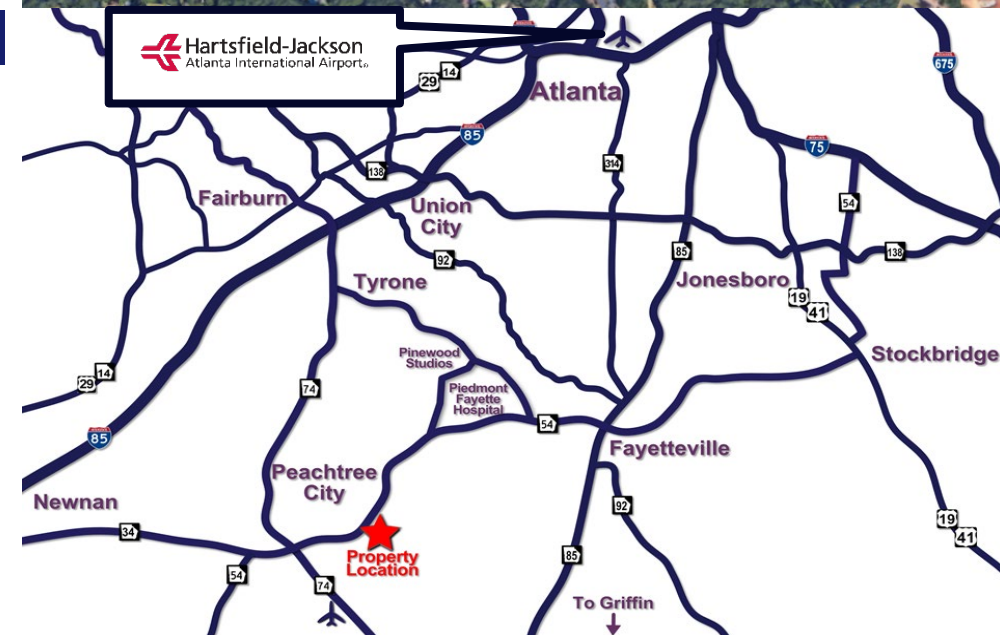
6000 Shakerag Hill, Suite 100, Peachtree City, GA


For more information please contact:
Brent Randolph Cell: 770.318.6815
Courtney Rogers Cell: 678.521.7442



Property Profile

- +/- 400 RSF Available
- Year Built: 2006
- Parking: 3/1,000 SF
- Easy access to Hwy 54, Hwy 74, & I-85
- Lease Rate: \$24.00/SF
- Zoning: O-I
- City: Peachtree City
- County: Fayette



 770-632-4000



ACBR
ATLANTA COMMERCIAL
BOARD OF REALTORS

RW | Randolph Williams

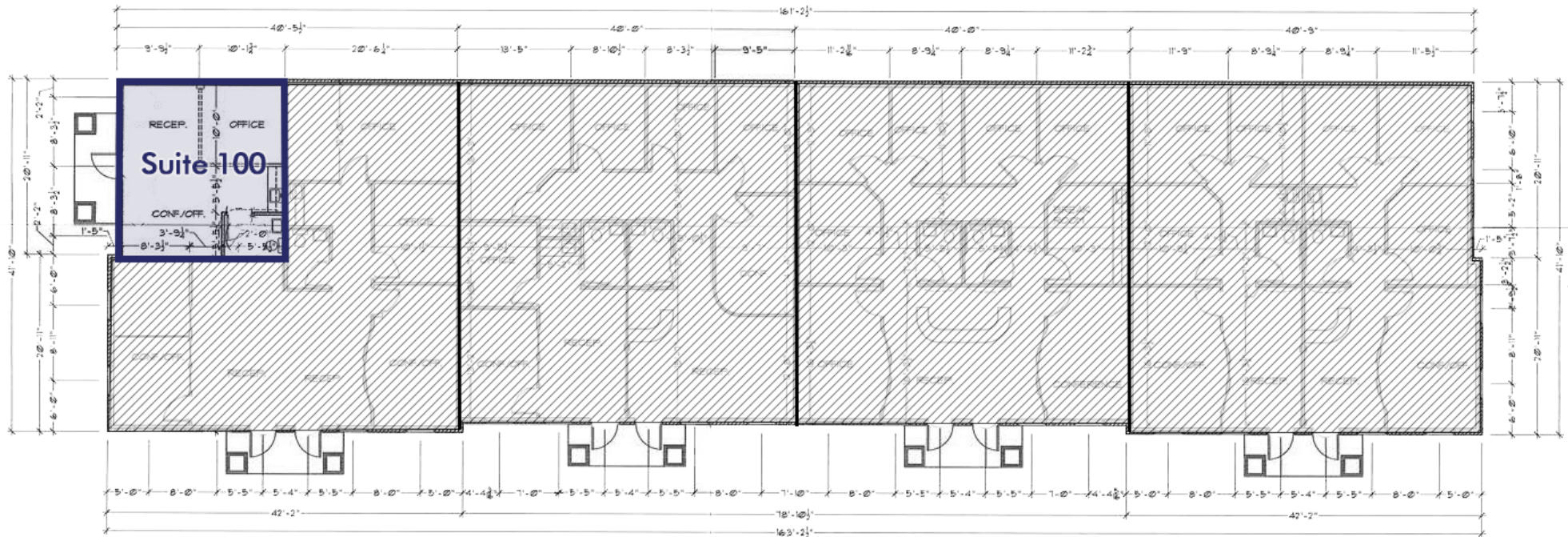
This information has been obtained from sources believed reliable. While we do not doubt its accuracy we have not verified it and make no guarantee, warranty or representation about it.

OFFICE SUITE FOR LEASE

6000 Shakerag Hill, Suite 100, Peachtree City, GA

For more information please contact:
Brent Randolph Cell: 770.318.6815
Courtney Rogers Cell: 678.521.7442

Space Plan



DIMENSIONED FLOOR PLAN

1/8" = 1'-0"

COMMERCIAL REAL ESTATE | DEVELOPMENT | CONSTRUCTION | PROPERTY MANAGEMENT

770-632-4000



RWCRE.net



ACBR
ATLANTA COMMERCIAL
BOARD OF REALTORS



Randolph
Williams

This information has been obtained from sources believed reliable. While we do not doubt its accuracy we have not verified it and make no guarantee, warranty or representation about it.