

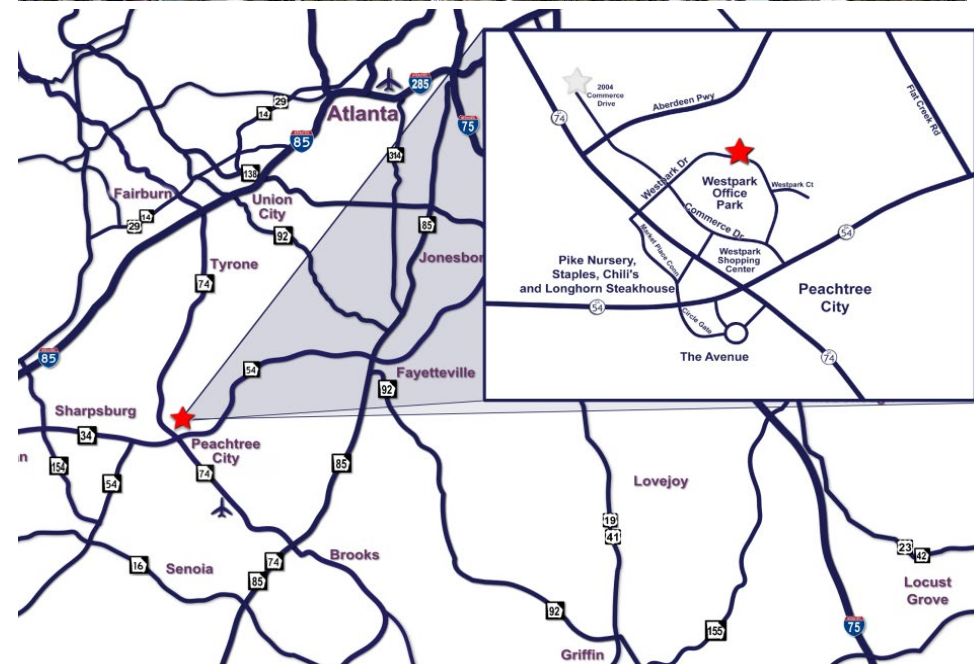
For more information please contact:
Brent Randolph Cell: 770.318.6815
Matt McClanahan Cell: 770-864-2652

For more information please contact:
Brent Randolph Cell: 770.318.6815
Matt McClanahan Cell: 770-864-2652



Property Profile

- Move-In Ready Office Space in Professional Office Park:
Suite 300: +/- 3,126 RSF
- 36,000 SF, 3-Story Class "A" Office Building
- Easy access to GA Hwy 54, 74, and I-85
- Adjacent to retail, restaurants and high-end residential
- Parking: 4 per 1,000
- Lease Rate: \$28.00/SF FSG
- High-speed Internet access and digital communications
- Beautifully landscaped and maintained grounds
- Year Built: 2000
- City: Peachtree City
- County: Fayette



 770-632-4000



RWCRE.net



ACBR
ATLANTA COMMERCIAL
BOARD OF REALTORS

RW

Randolph
Williams

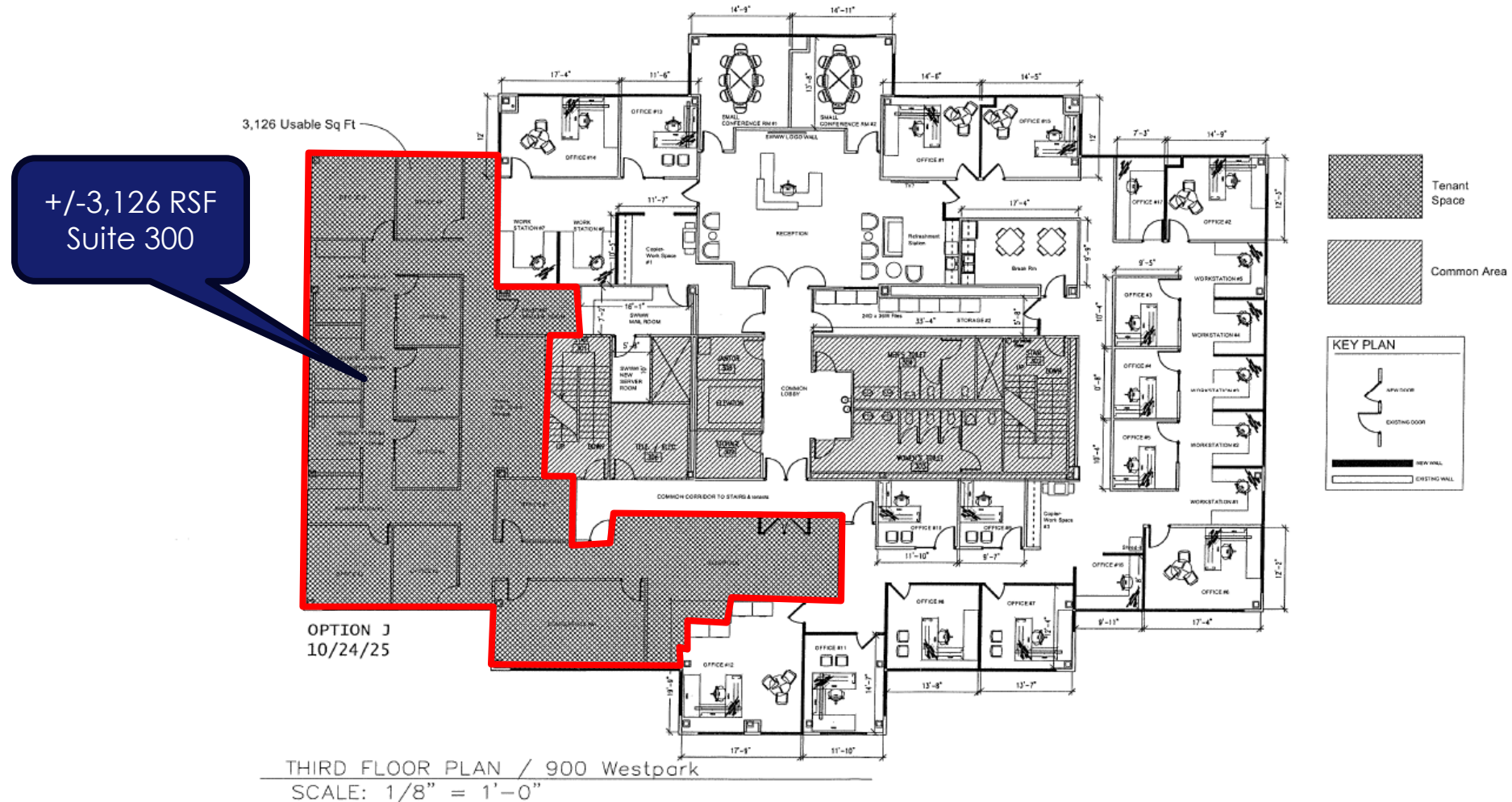
This information has been obtained from sources believed reliable. While we do not doubt its accuracy we have not verified it and make no guarantee, warranty or representation about it.

CLASS "A" OFFICE SUITES FOR LEASE – New Ownership!

900 Westpark Drive, Peachtree City, GA 30269

For more information please contact:
Brent Randolph Cell: 770.318.6815
Matt McClanahan Cell: 770-864-2652

Floor Plan – Third Floor – Suite 300 +/- 3,126 RSF Available



COMMERCIAL REAL ESTATE | DEVELOPMENT | CONSTRUCTION | PROPERTY MANAGEMENT

770-632-4000

RWCRE.net



ACBR
ATLANTA COMMERCIAL
BOARD OF REALTORS



Randolph
Williams

This information has been obtained from sources believed reliable. While we do not doubt its accuracy we have not verified it and make no guarantee, warranty or representation about it.