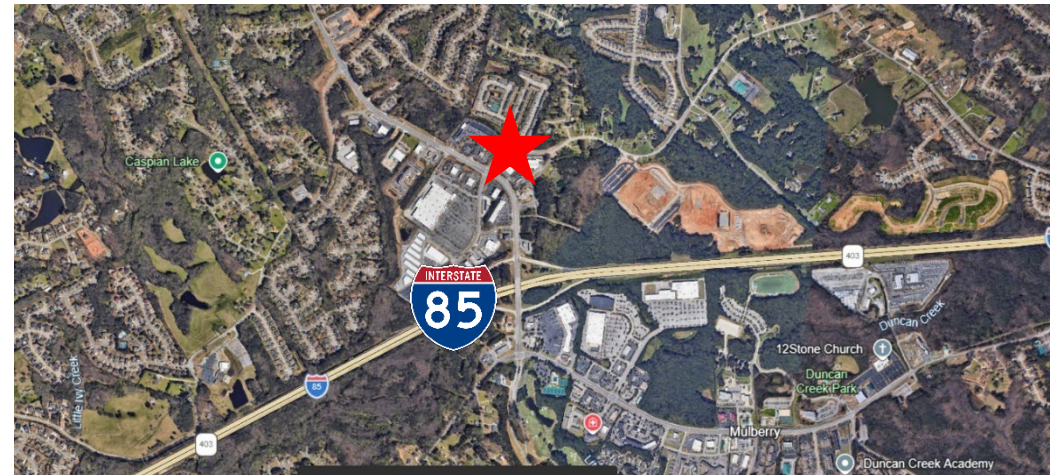


# Ground Lease Opportunity

3300 Sardis Church Road, Mulberry, GA 30519

For more information please contact:  
Michael Johnson Cell: 404.663.3728



## Property Profile

- +/- 0.54 Acres
- Lease Rate: Inquire
- Convenient Access to I-85
- Zoned: C-2 Commercial
- Adjacent to Walmart Supercenter
- Ideal for Retail, Medical, or Service User
- Established Retail Corridor Near Restaurants, Retail, & Service Uses
- City: Mulberry
- Strong Surrounding Residential Base
- County: Gwinnett



COMMERCIAL REAL ESTATE | DEVELOPMENT | CONSTRUCTION | PROPERTY MANAGEMENT

770-632-4000

RWCRE.net



ACBR  
ATLANTA COMMERCIAL  
BOARD OF REALTORS



Randolph  
Williams

# Survey

